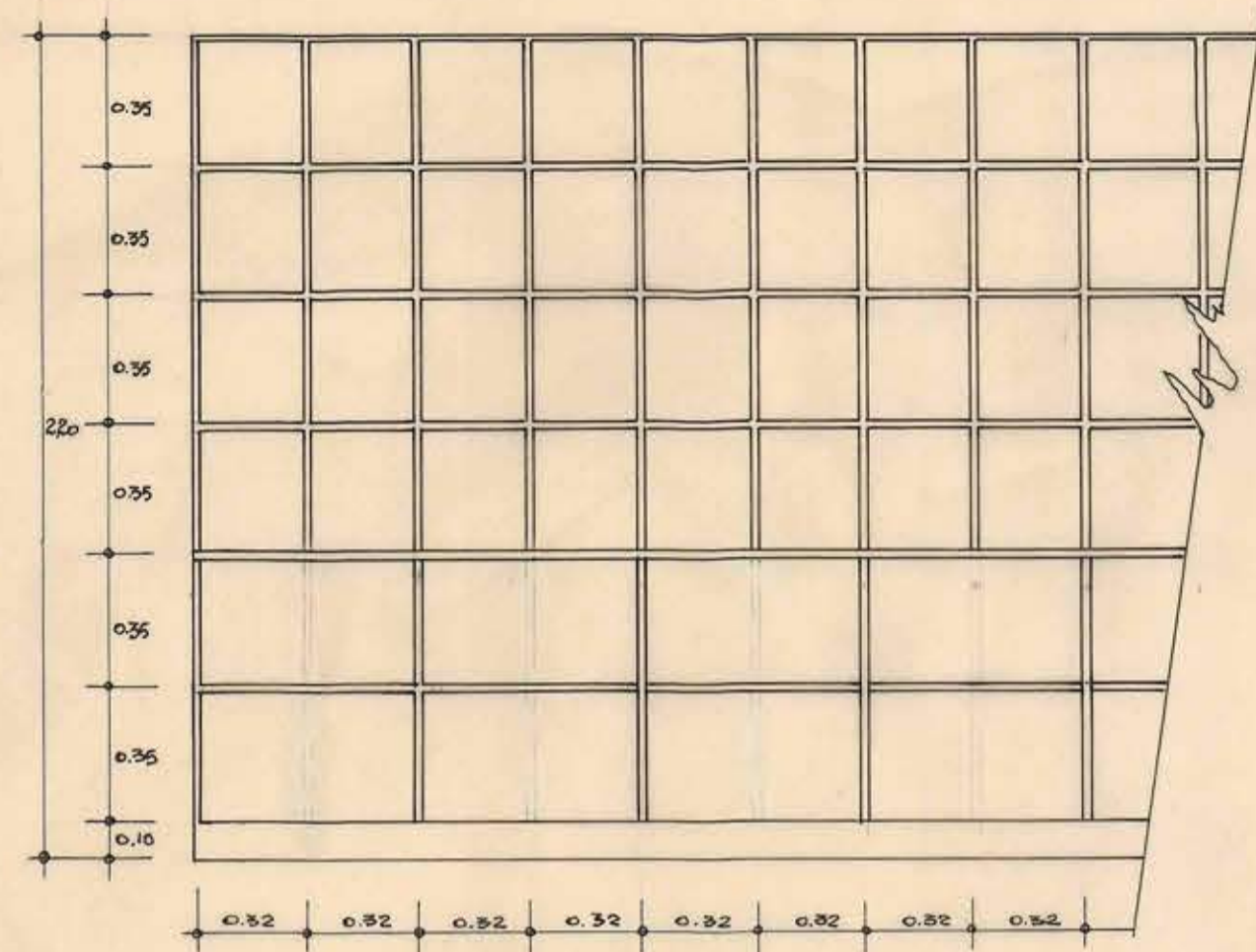
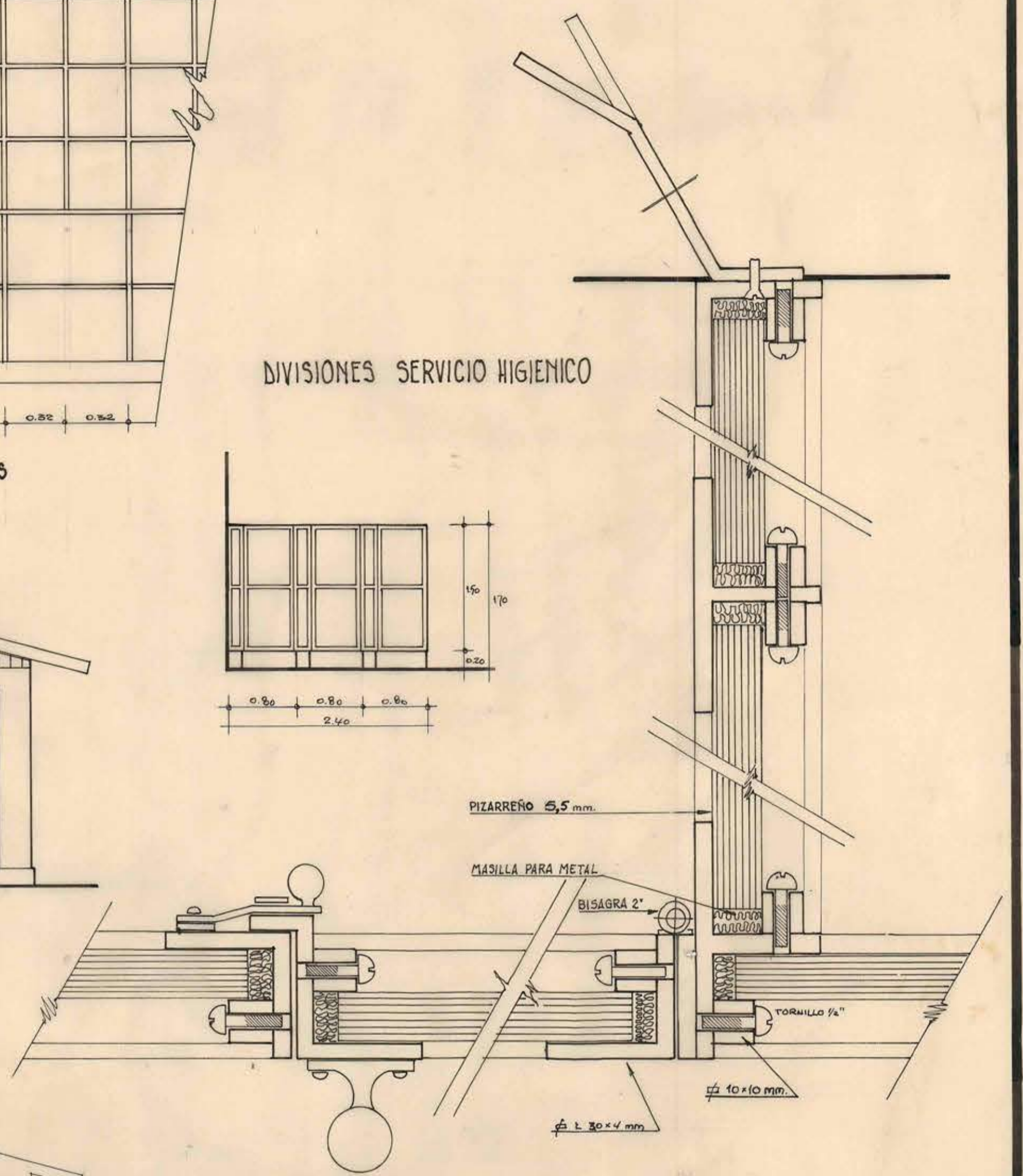
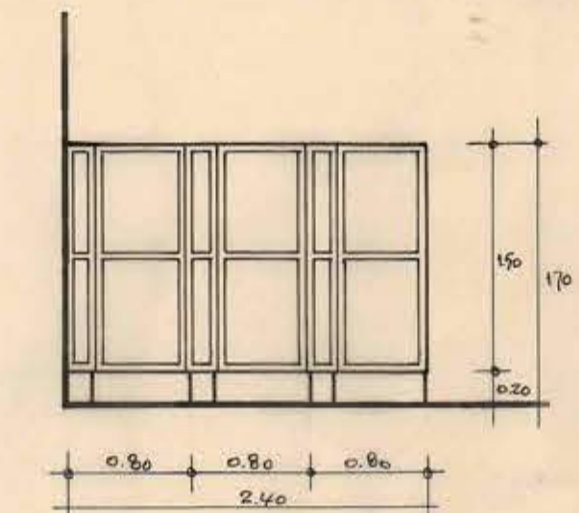


DETALLES ALEROS

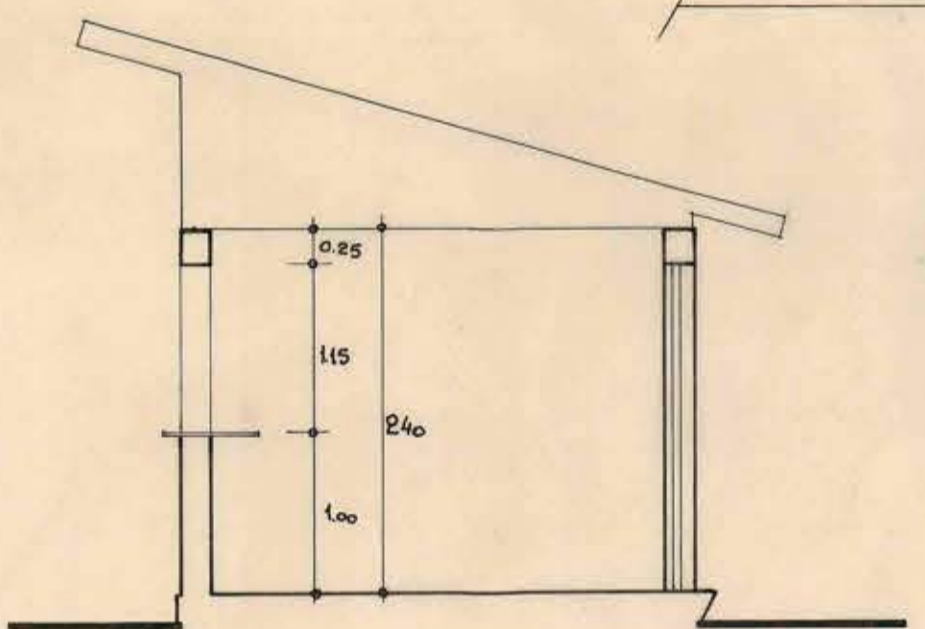


DETALLE CASILLEROS

DIVISIONES SERVICIO HIGIENICO

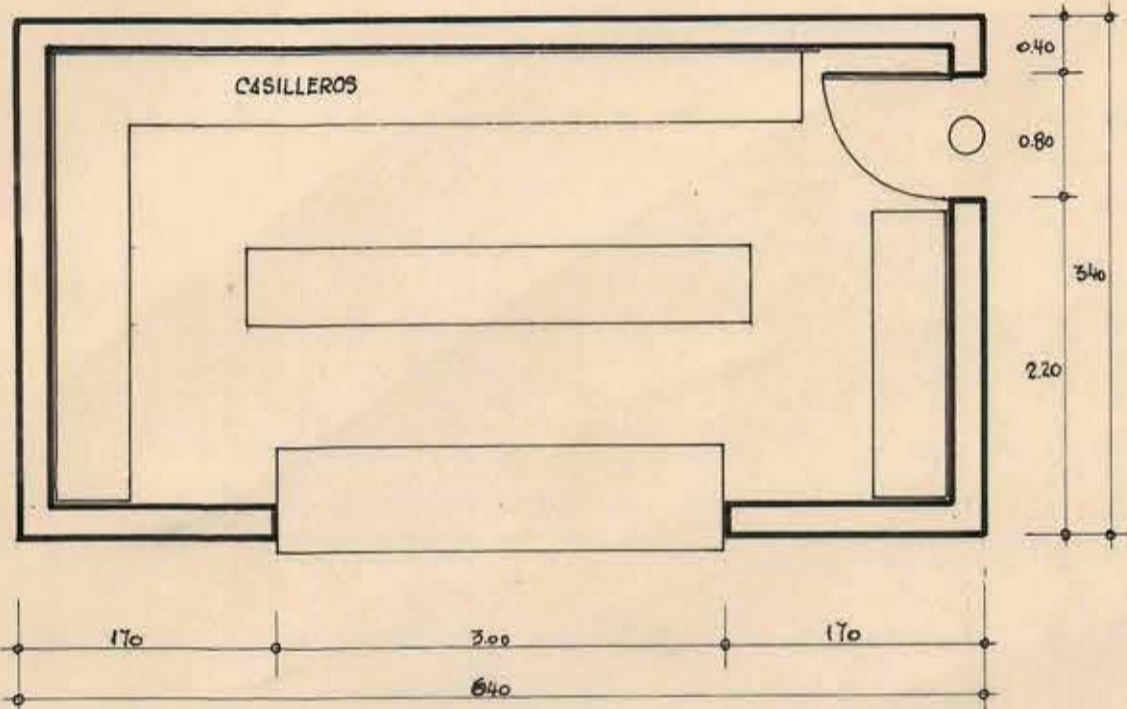
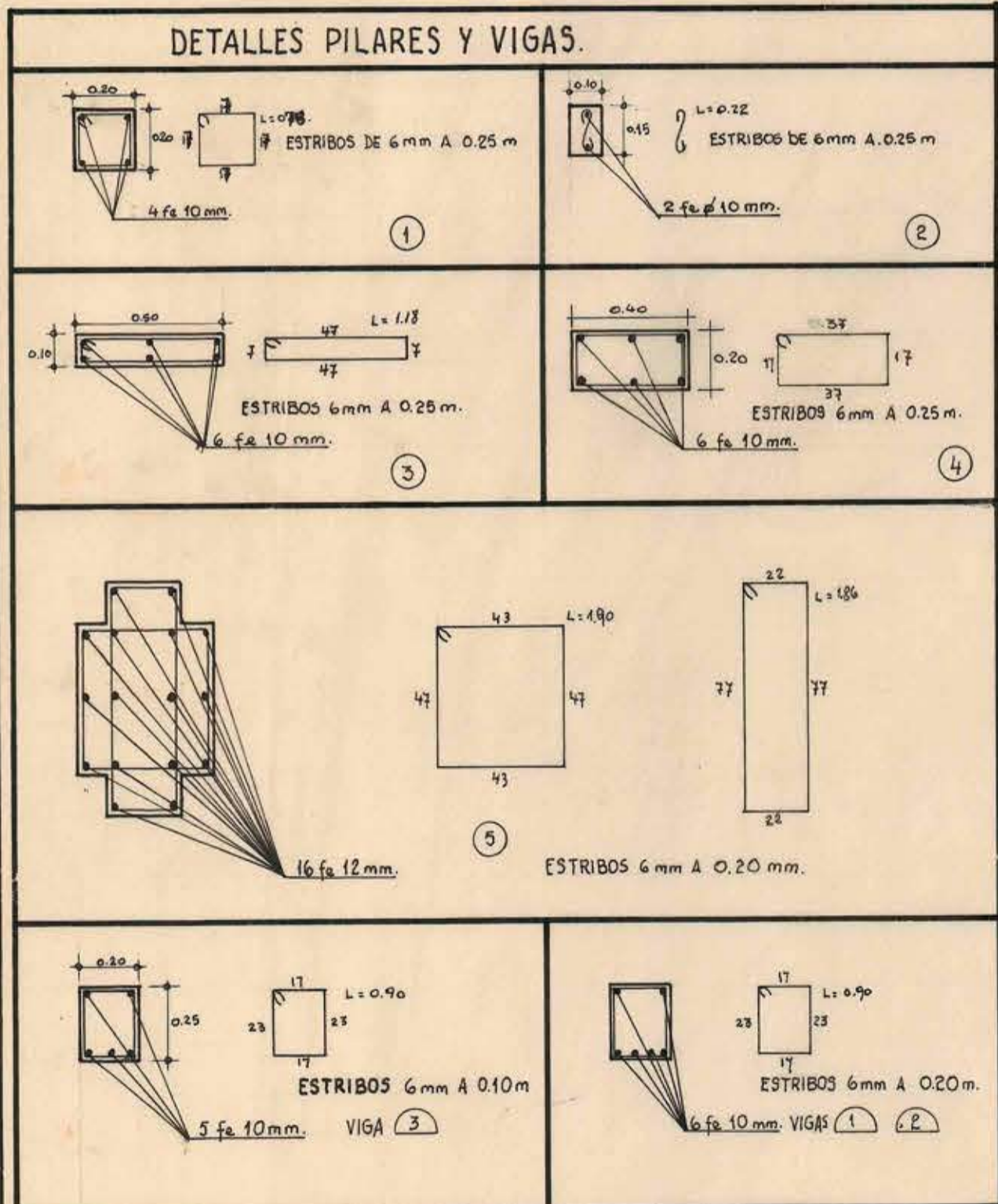


COSTADO NORTE

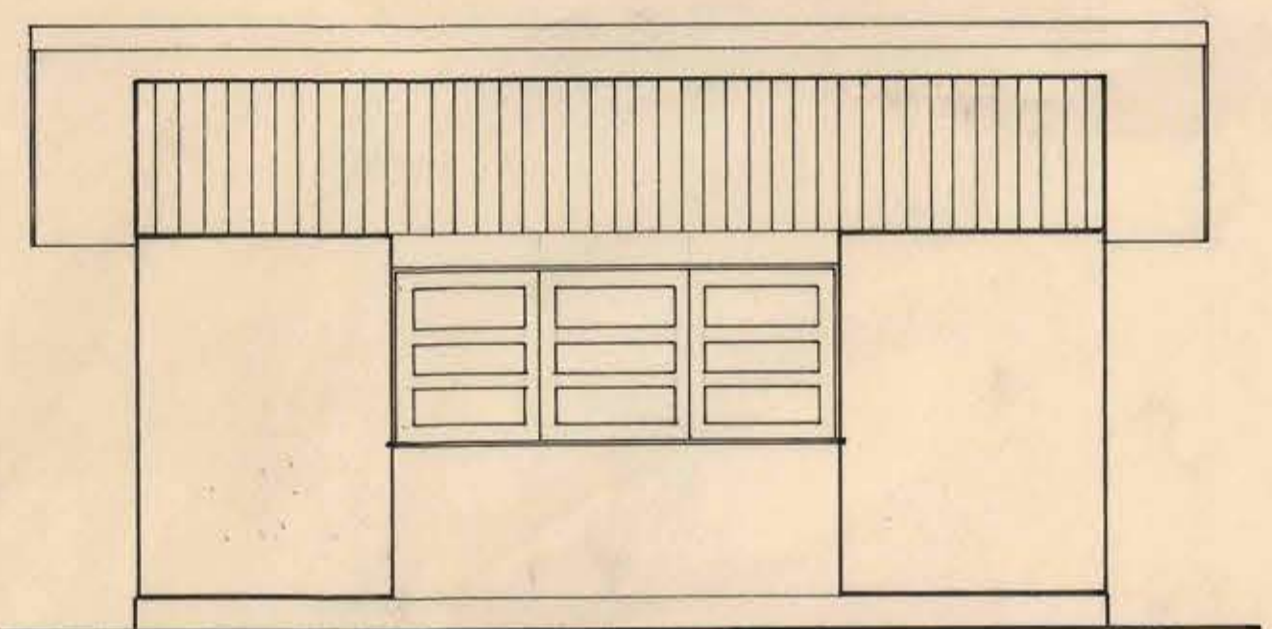


CORTE

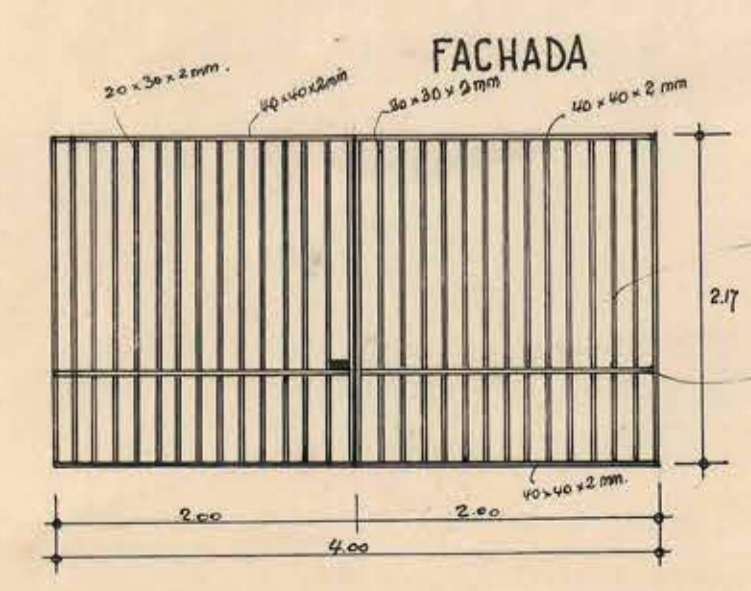
CORTE CAMARINES



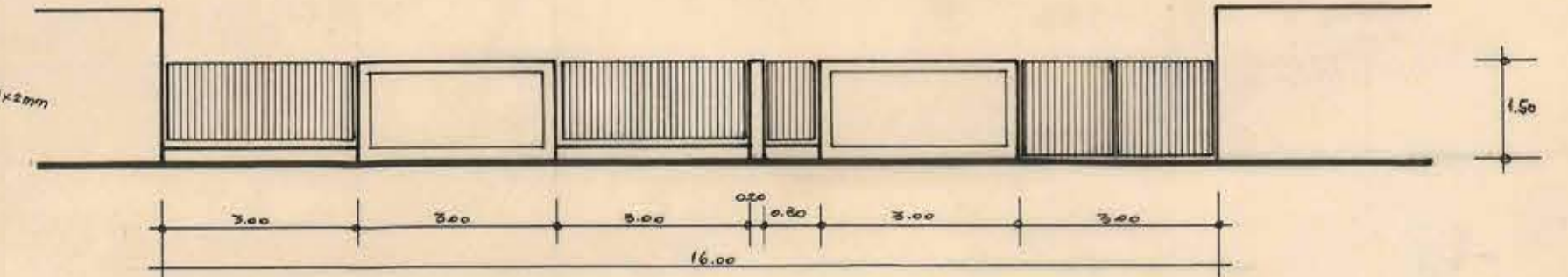
PLANTA GUARDARROPIA



PORTON ACCESO



FACHADA



CIERRO CASA ADMINISTRADOR

D.G.O.P. DIRECCION DE ARQUITECTURA
 OFICINA PROVINCIAL DE ACONCAGUA.
 ESTADIO FISCAL DE SAN FELIPE ESC. 1:50-20-1-100
 DETALLES VARIOS PLANO Nº 3
 SAN FELIPE, 29-IX-68

OSVALDO REYES SANCHEZ OSVALDO MUÑOZ RAMOS
 CONSTRUCTOR DE EDIFICIOS ARQUITECTO PROVINCIAL



5 ABR. 1966