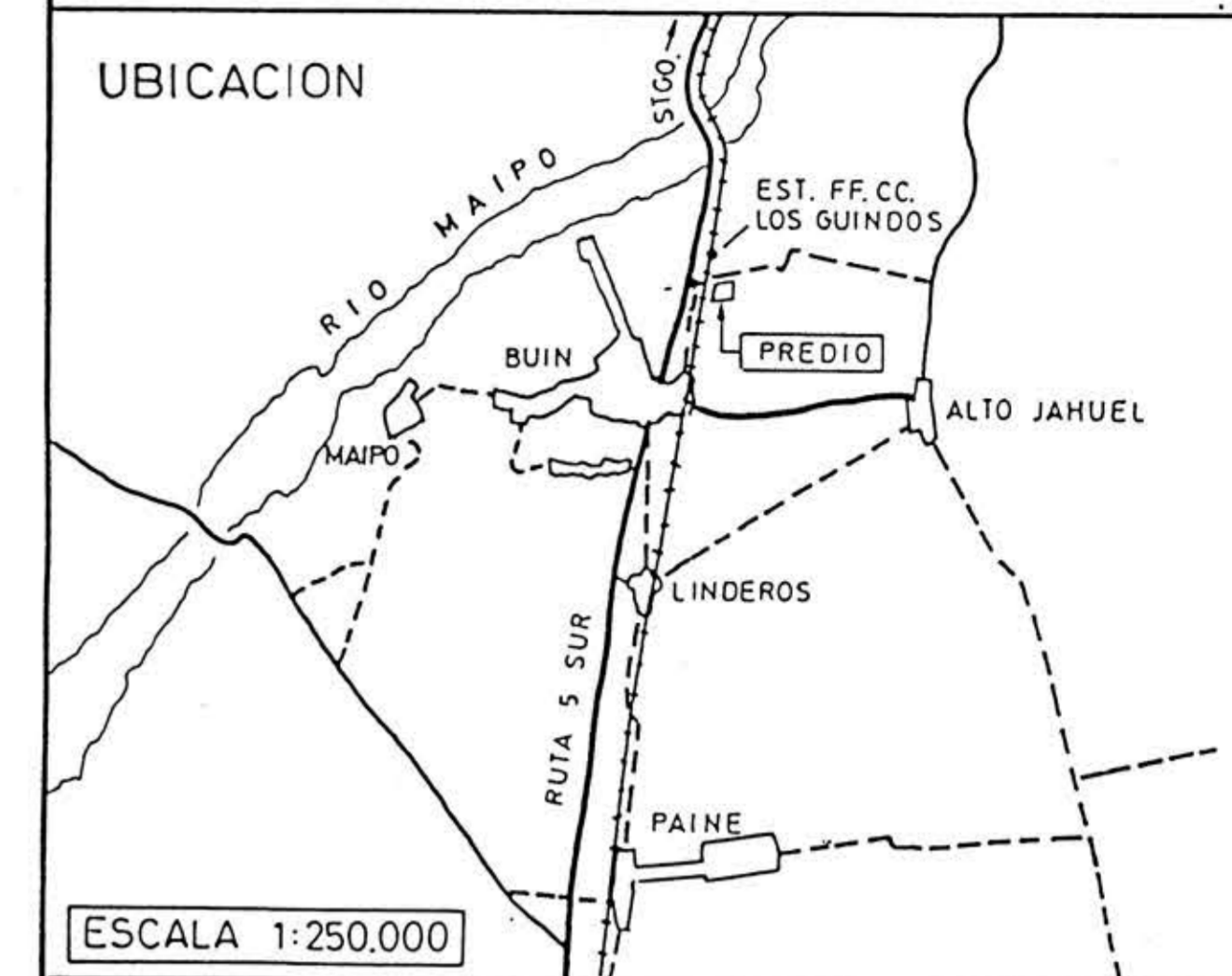




cóporación nacional forestal
región metropolitana

UBICACION



ESCALA 1:250.000

SIMBOLOGIA

- ==== CARRETERA
- ==== CAMINO SIN PAVIMENTAR
- SENDERO
- x--- CERCO
- CANAL
- LIMITE PREDIAL

- ARBORETUM 1.8 Ha.
- VIVERO 1.0 Ha.
- PARQUE 4.5 Ha

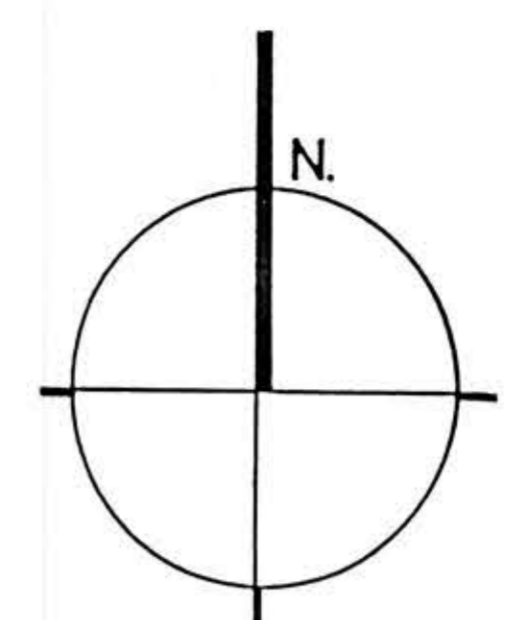
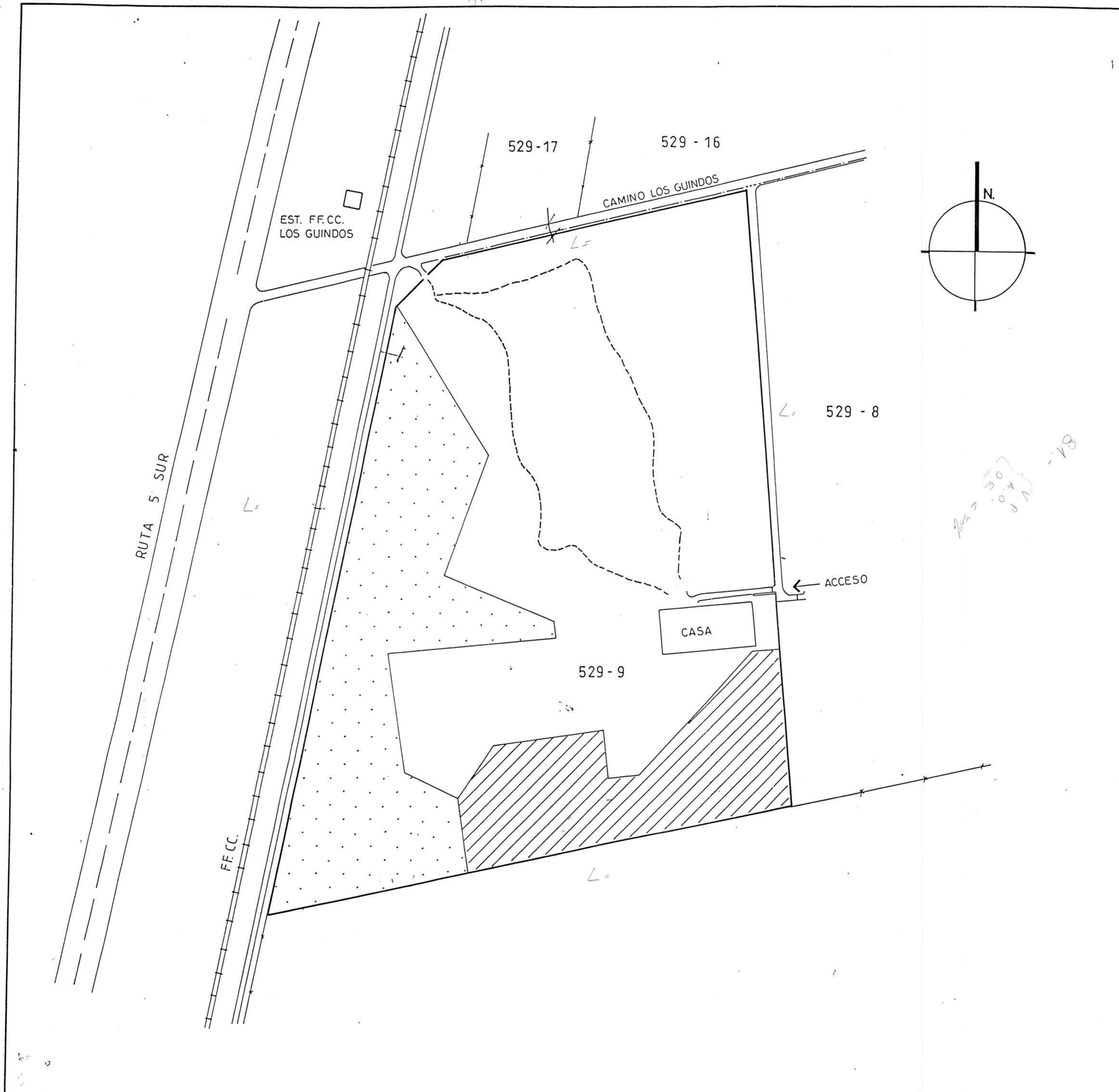
SUP. TOTAL 7.3 Ha

PREDIO: EL PARQUE ROL: 529-9

PROPIETARIO: FISCO

Comuna : BUIN SUP.: 7.3 ha.
Provincia: MAIPO
Región : METROPOLITANA

Fuente: ESCALA 1: 2.000
Ampliación ortofoto N° 19725 Dibujo : Pablo Castro M.
Fotog. aérea SAF CH 30 Nos. Fecha : Feb. - 1992
019643 - 019642.



Handwritten notes: 81-10, 10, 11, 12, 13, 14, 15, 16, 17, 18, 19, 20, 21, 22, 23, 24, 25, 26, 27, 28, 29, 30, 31, 32, 33, 34, 35, 36, 37, 38, 39, 40, 41, 42, 43, 44, 45, 46, 47, 48, 49, 50, 51, 52, 53, 54, 55, 56, 57, 58, 59, 60, 61, 62, 63, 64, 65, 66, 67, 68, 69, 70, 71, 72, 73, 74, 75, 76, 77, 78, 79, 80, 81, 82, 83, 84, 85, 86, 87, 88, 89, 90, 91, 92, 93, 94, 95, 96, 97, 98, 99, 100