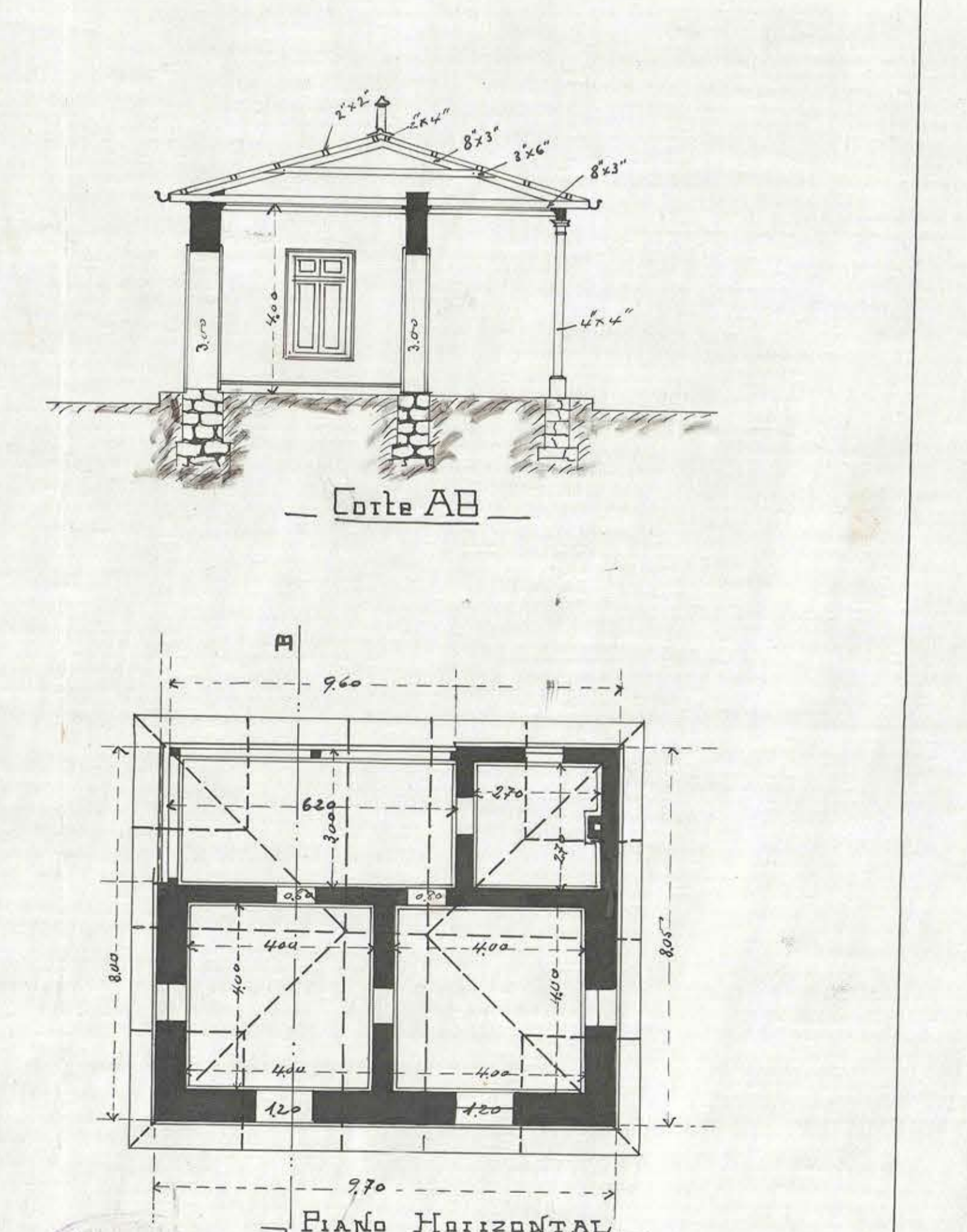
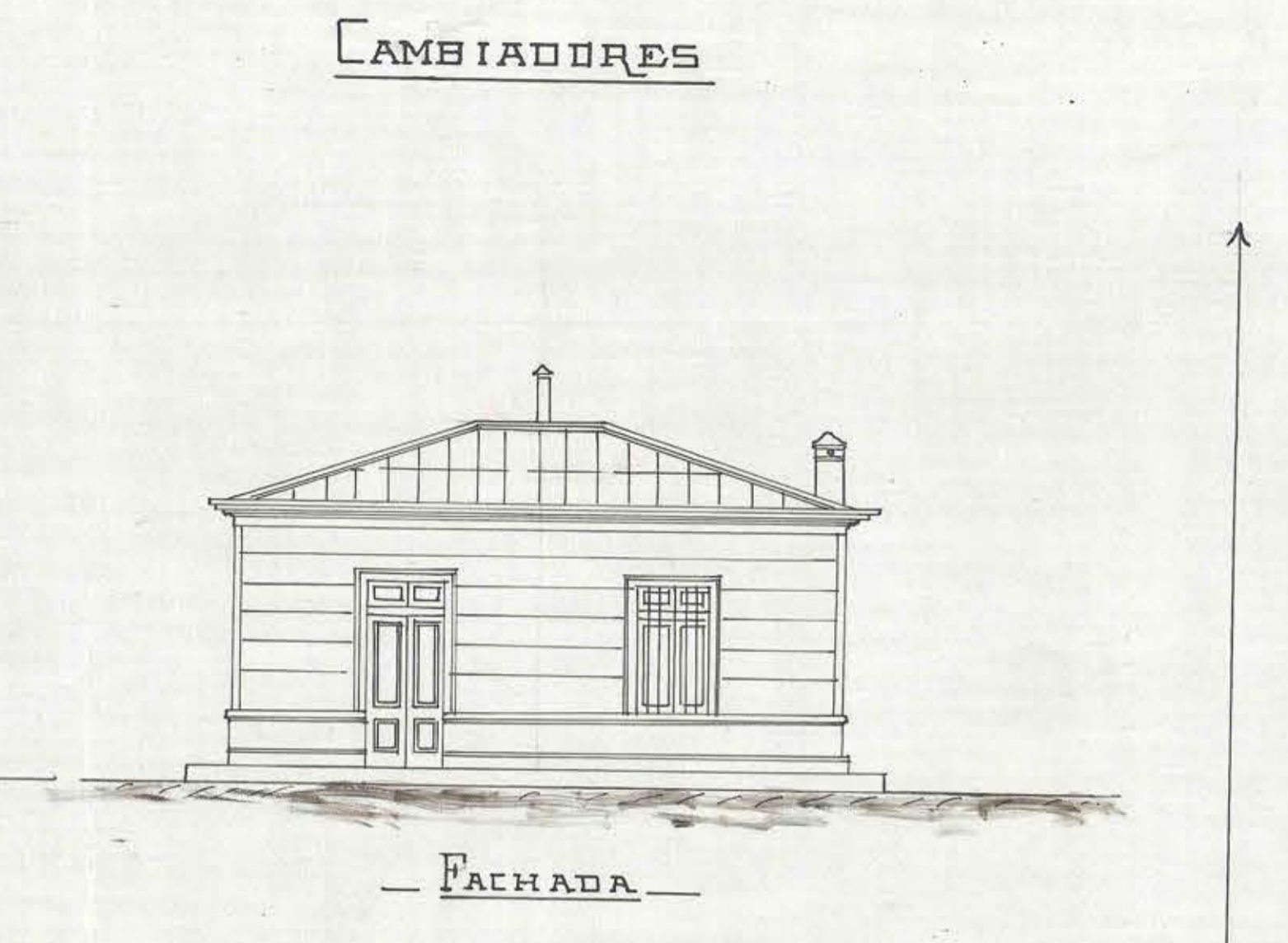
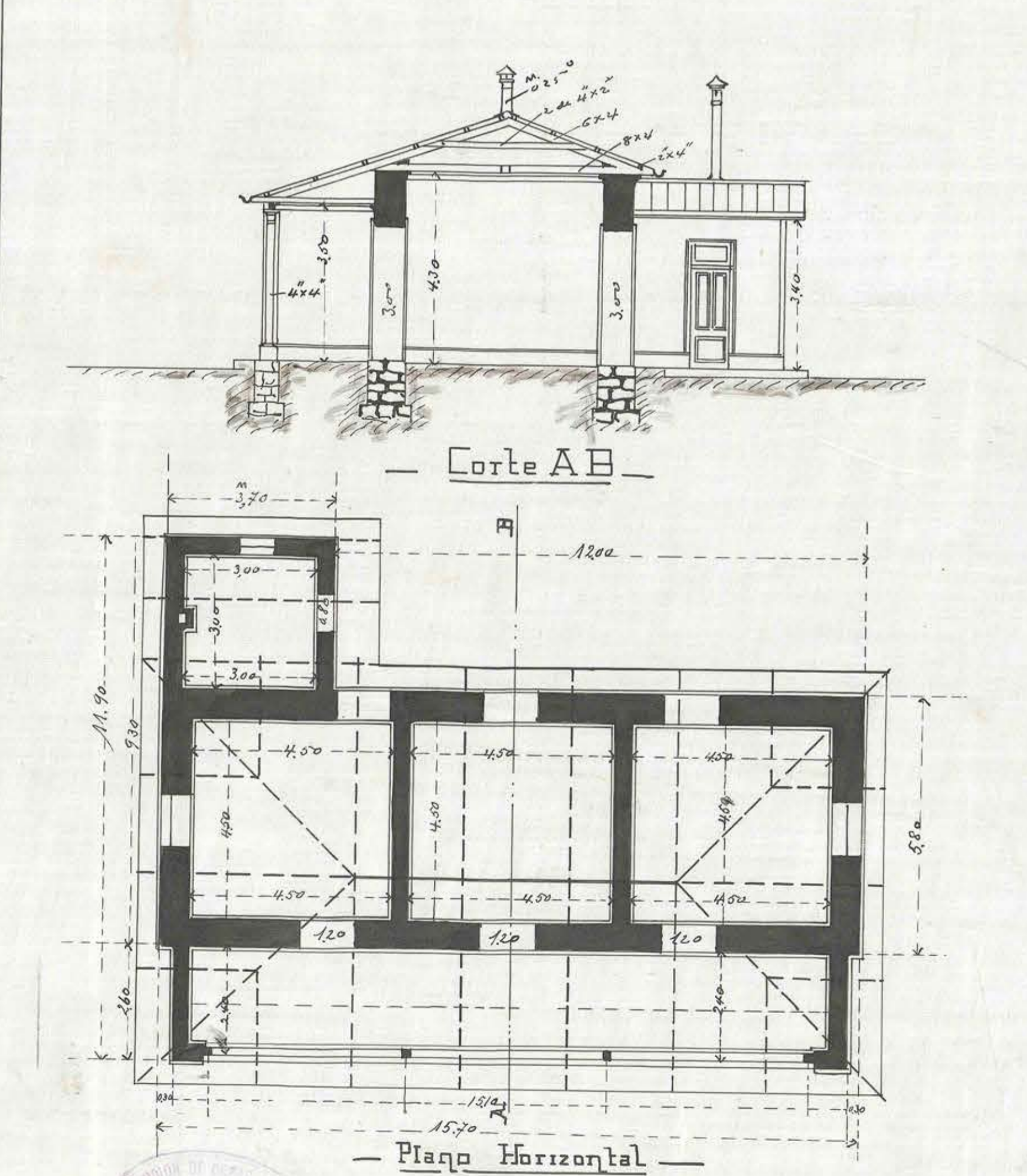
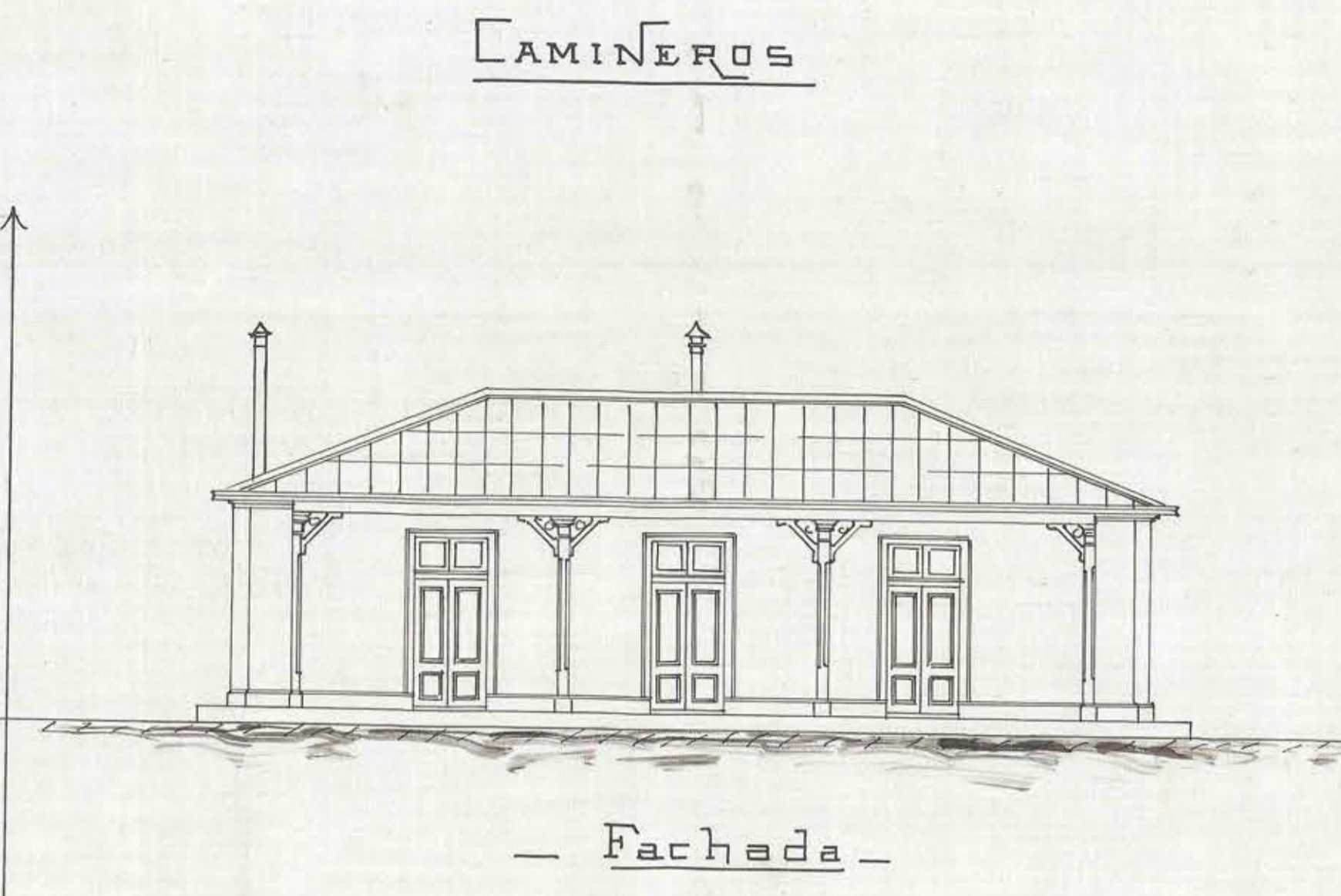
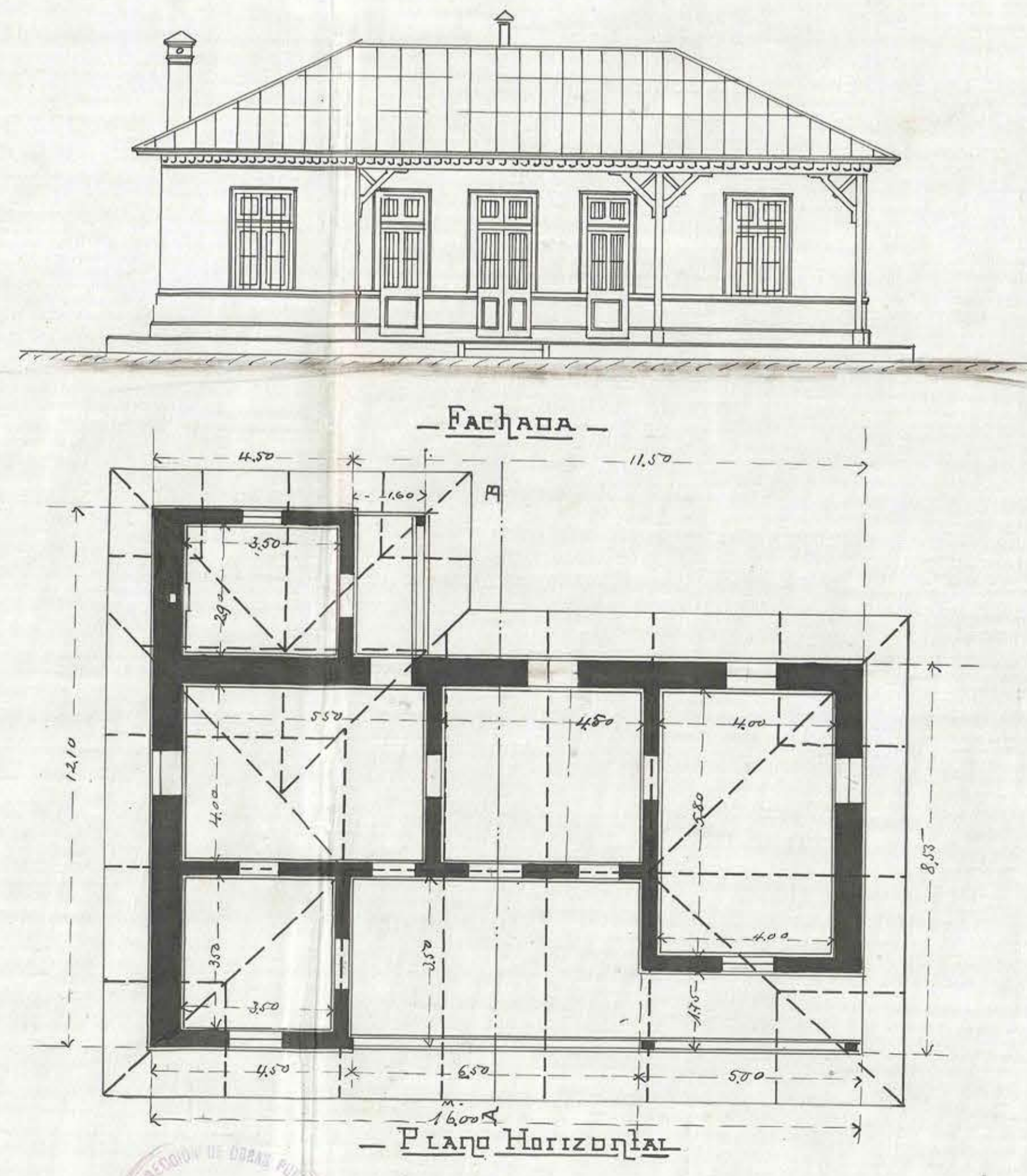
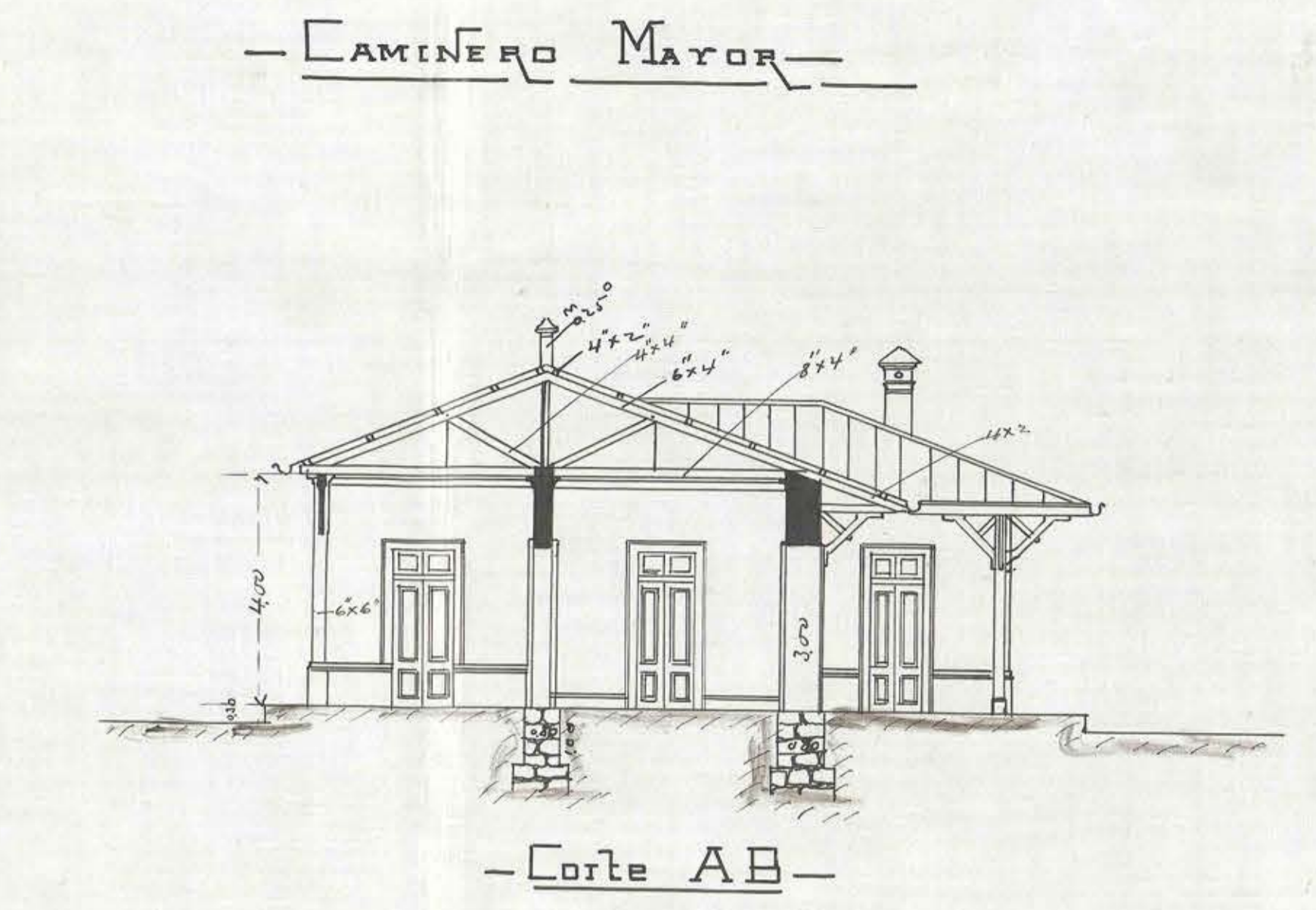
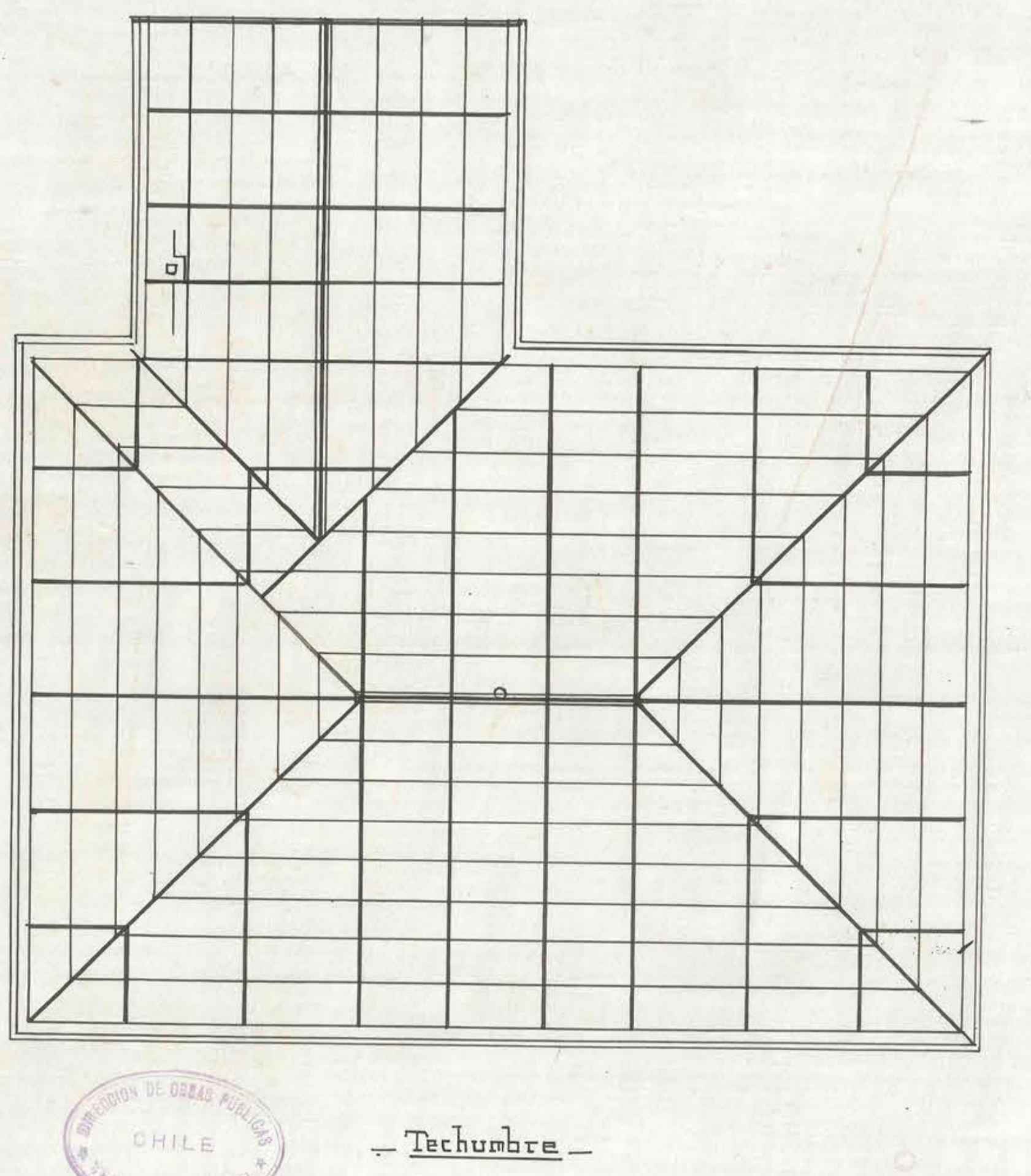
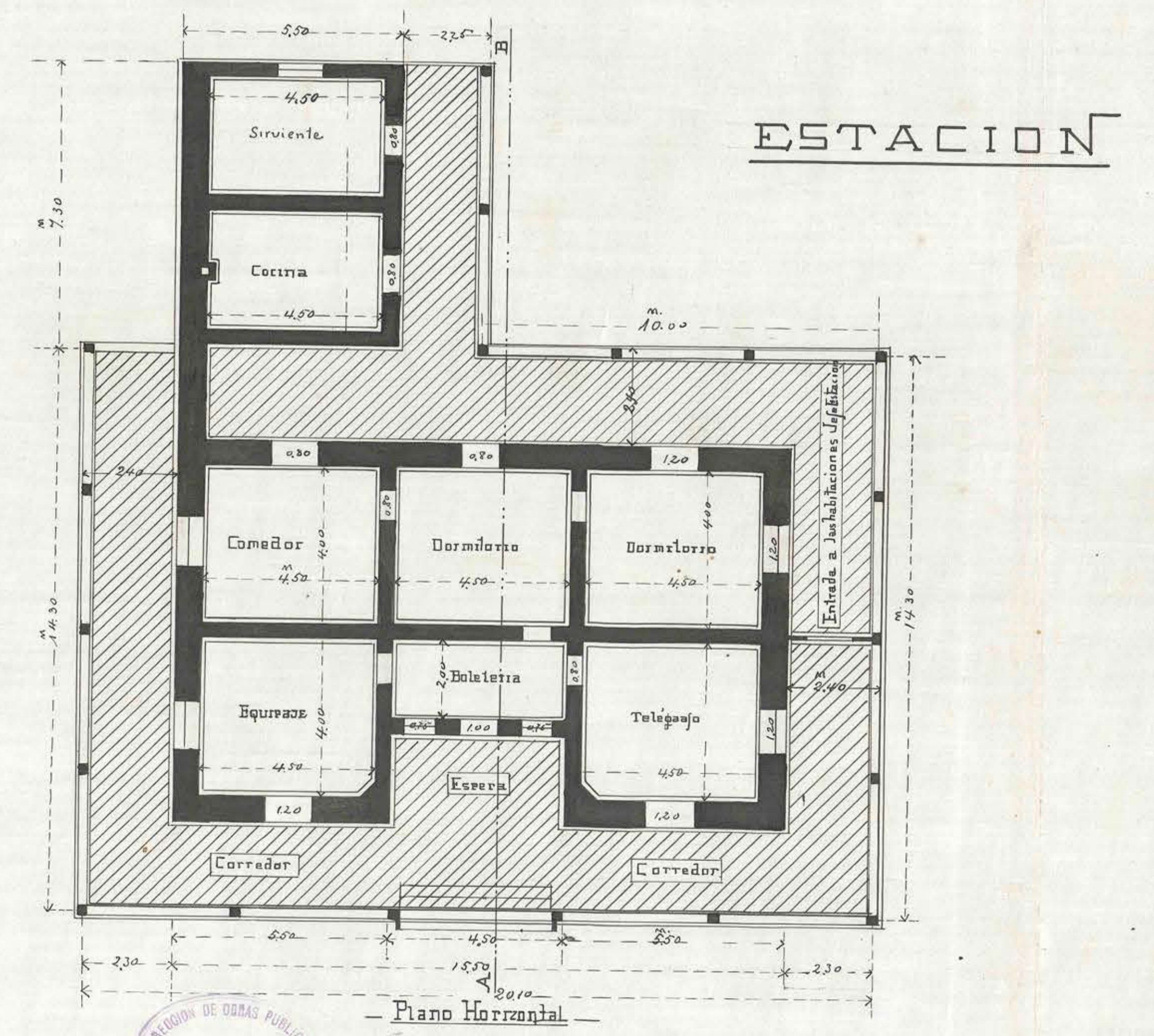
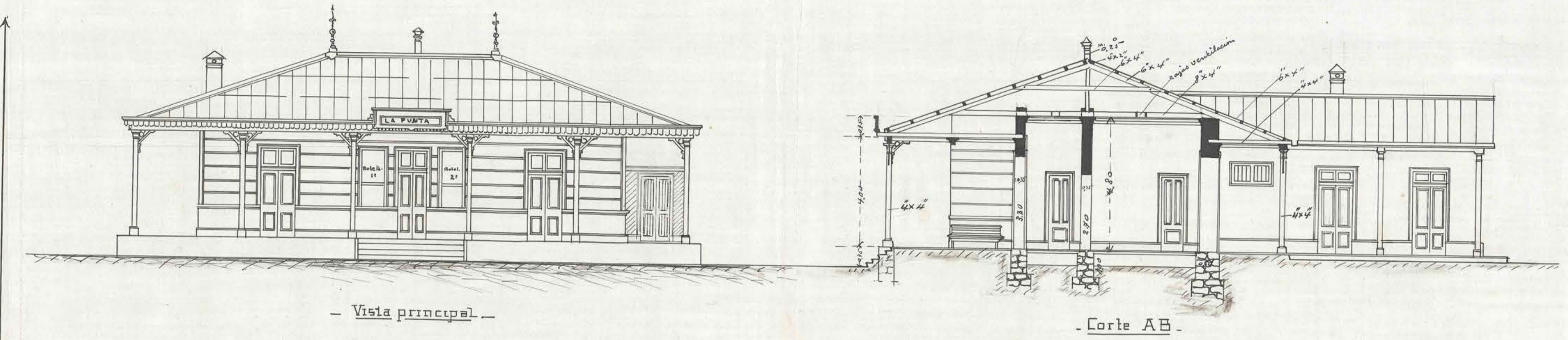


FERROCARRIL  
 DE  
 SERENA a RIVADAVIA  
 PROYECTO DE CASAS  
 para  
 ESTACION-CAMINEROS  
 CAMBIADORES  
 Y  
 CAMINERO MAYOR  
 Santiago Octubre de 1898

*Arquitecto*  
 D. Donoso  
 COMISION DE OBRAS PUBLICAS  
 CHILE  
 TERCERA SECCION



COMISION DE OBRAS PUBLICAS  
 CHILE  
 TERCERA SECCION

COMISION DE OBRAS PUBLICAS  
 CHILE  
 TERCERA SECCION

COMISION DE OBRAS PUBLICAS  
 CHILE  
 TERCERA SECCION

COMISION DE OBRAS PUBLICAS  
 CHILE  
 TERCERA SECCION