

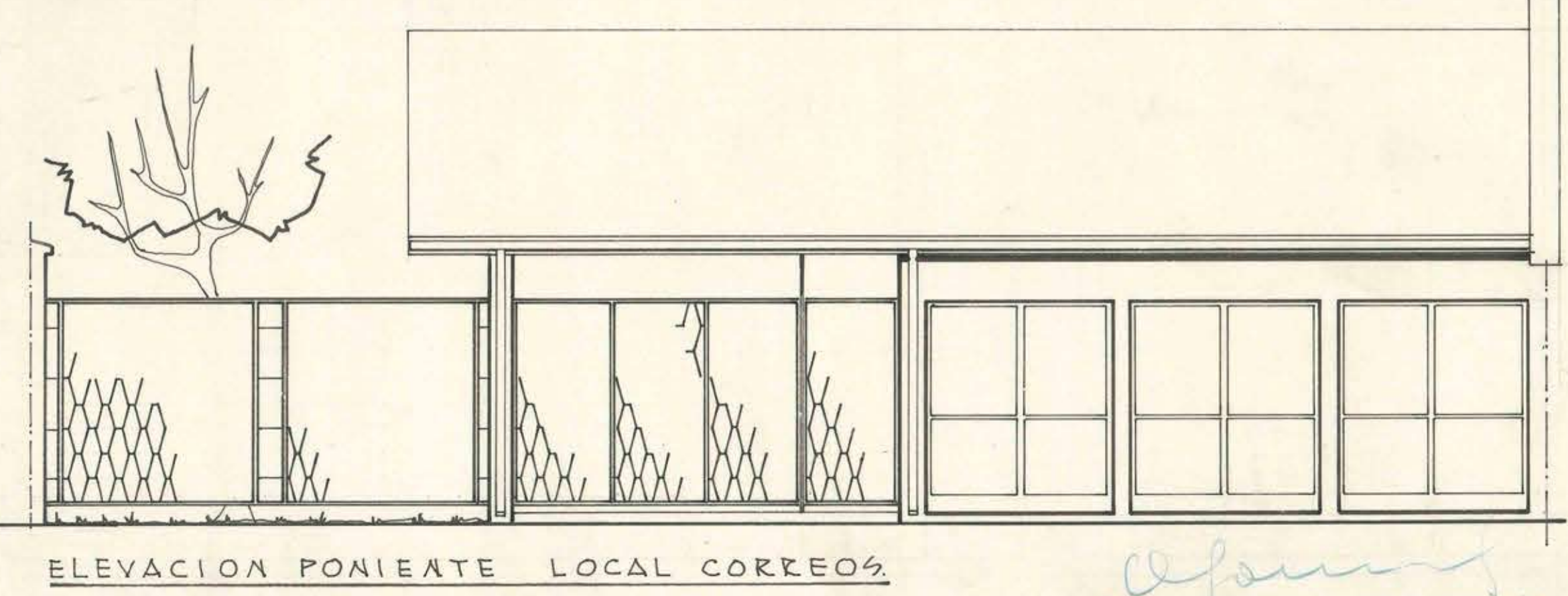
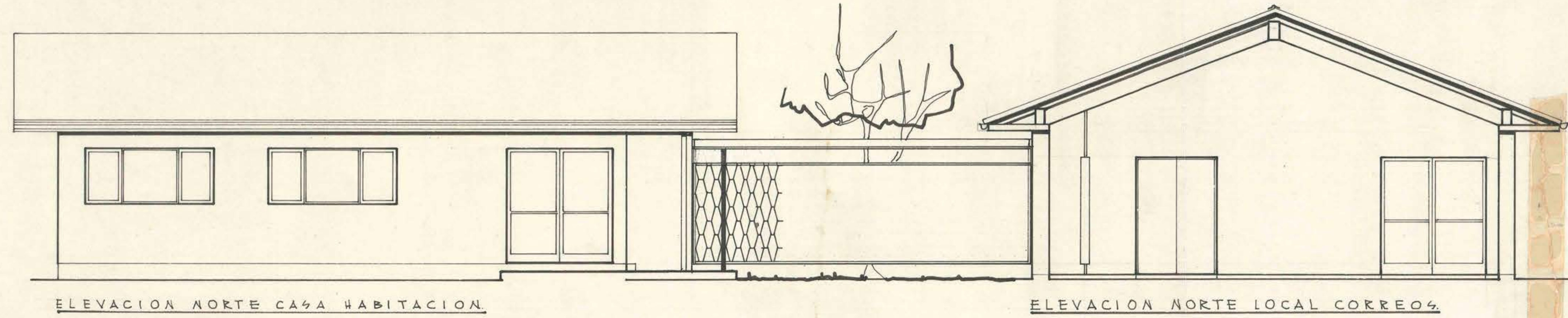
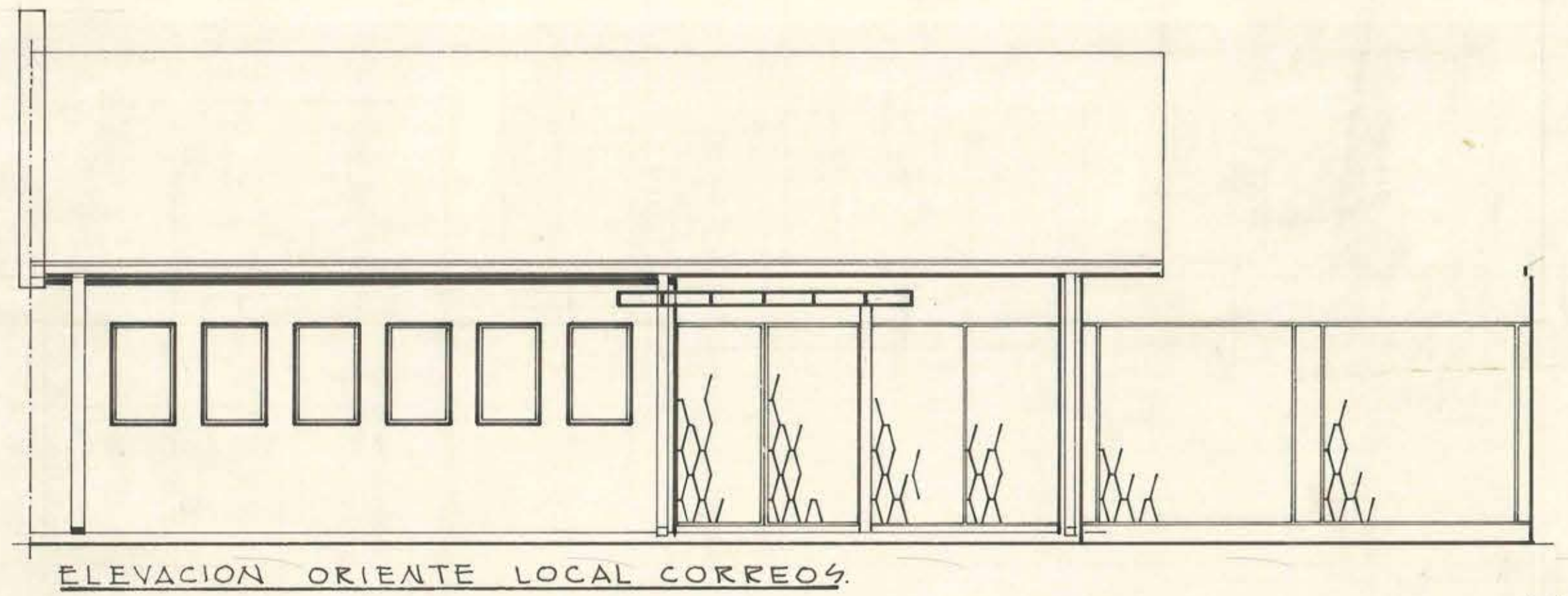
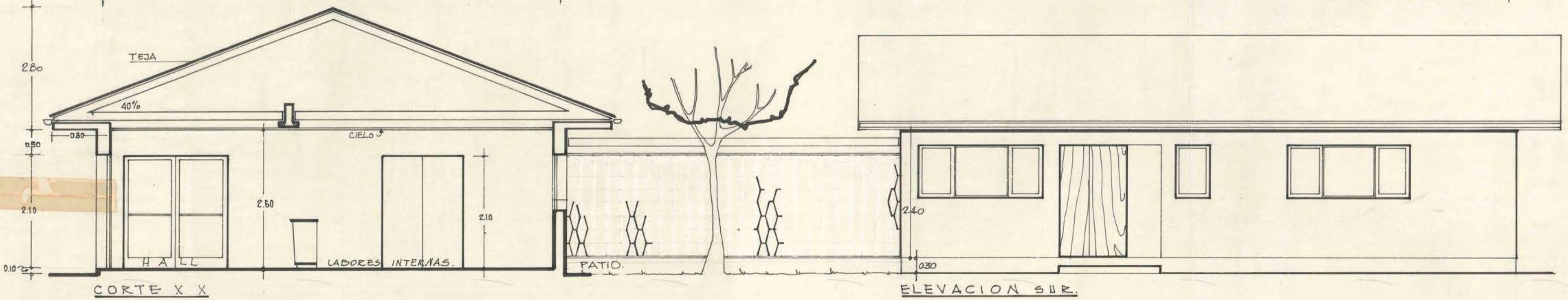
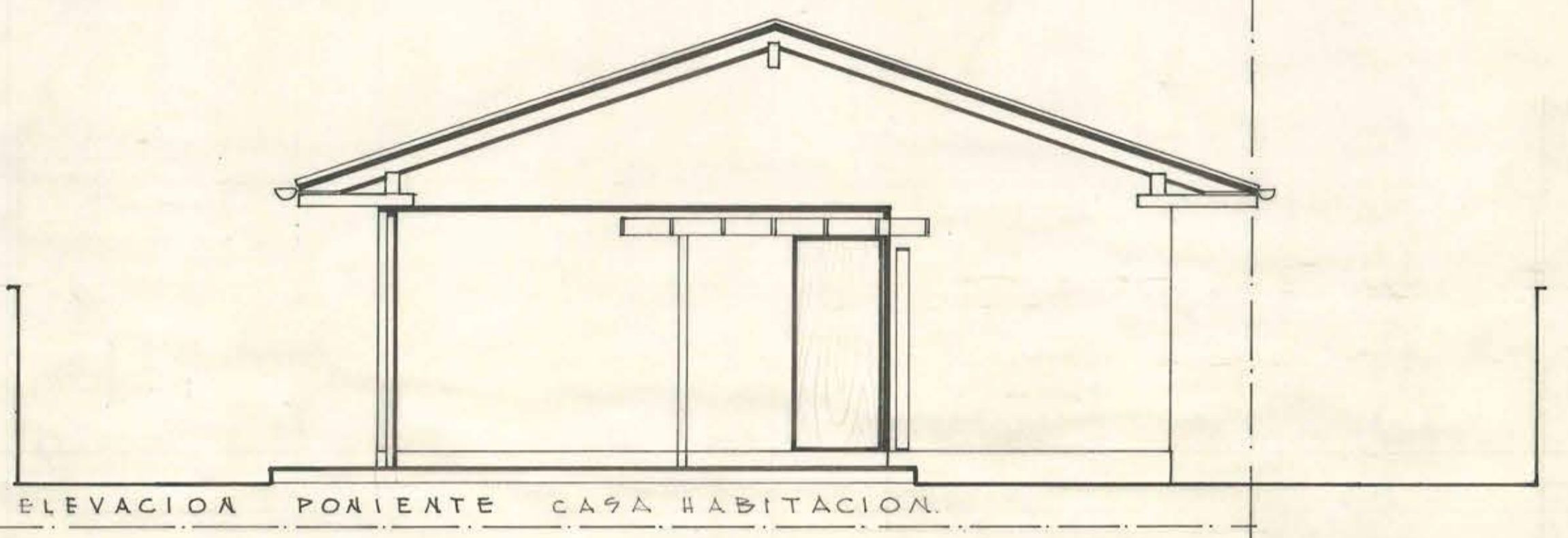
DIRECCION DE ARQUITECTURA DEPTO. ESTUDIOS M.O.P.
CORREOS Y TELEGRAFOS RAPEL DE NAVIDAD.
 PLANTAS Y ELEVACIONES. Esc. 1:50.
 MAYO - 1962

SUPERFICIES

LOCAL CORREOS. RECINTO CORREOS ZAGUAN.	56.31 M ² 34.80
CASA ADMINISTRADOR.	71.737 M ²
TOTAL.	168.847 M ²



6 JUN 1962



Cont. 1445 - Ene P/63
 17-7-62